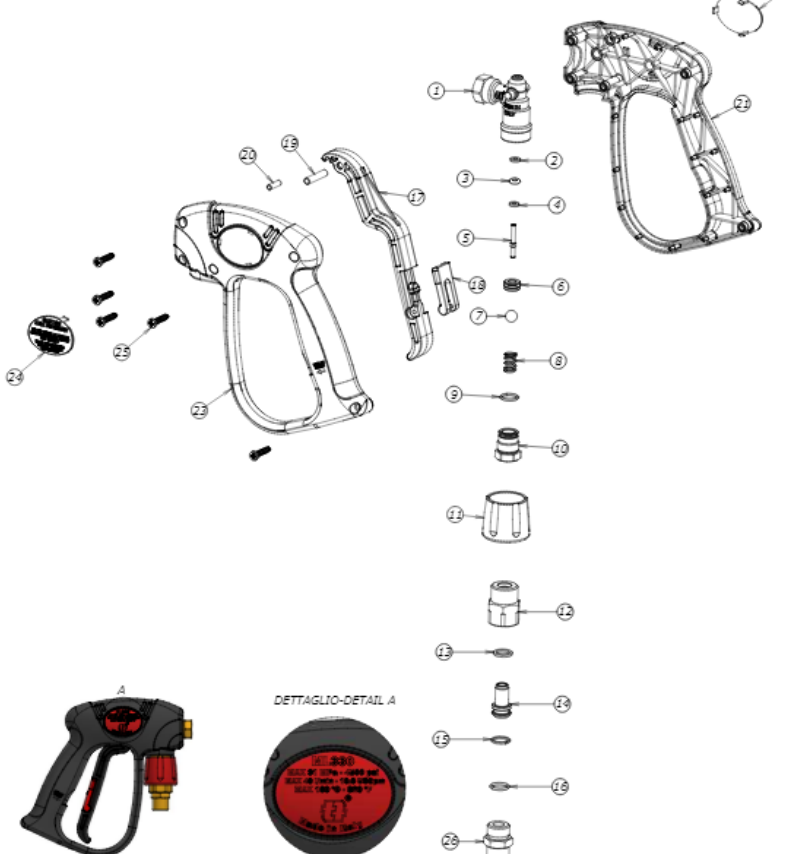




DETTAGLIO-DETAIL B



DETTAGLIO-DETAIL A



Num.	Codice	Descrizione Completa	Quant.	Kit 1	Kit 2	Kit 3	Kit 4
1	C00015016	CORPO ML 330 G 1/4 F OT	1				
2	000117	ANELLO ANT. 3,10x 7,40x1,30 TB	1	x			
3	060143	GUOR 2.84X2.62 104 VITON 75 NERO	1	x			
4	R00300014	RONDELLA 3 X 7 X 1,5 OTTONE	1	x			
5	P00004009	PERNO PREMISFERA ML 330	1	x			
6	0106200140	SEDE MV2001 CONIATA COIN OR NBR 90	1	x			
7	0112720070	SFERA 11/32 AISI440 C GR10 ISO 3290	1	x			
8	100044	MOLLA CIL. 1,3X8,8X13,5 IX	1				
9	0110750700	GUOR 1.5X11 NBR 90 NERO	1	x			
10	R00000251	RACC. ENTR. ML 330 SWIVEL OT	1				
11	M01700055	MANOPOLA SWIVEL ML330 ROSSA	1				
12	0115710160	RACCORDO GIREVOLE G 3/8 F OT	1				
13	0117740170	RONDELLA 14 X 10 X 1,5 MV 870 17	1				x
14	0116720200	VITE INNESTO GIREV. VERS. STD IX	1				
15	0117740120	A.A. 11,20X14,00X1,20 TBT	1				x
16	060130	GUOR 1.78X10.82 2043 VITON 75 NERO	1				x
17	L00002057	LEVA ML320-330 NERA	1		x		
18	0100740300	SICURA MV2000 - ROSSA -	1		x		
19	P00000091	PERNO LEVA ML 330 D.5X25 INOX	1		x		
20	0118770030	SPINA 4X14 INOX	1		x		
21	S02301278	SCOCCA ML 330 DX NERA	1			x	
22	T00200227	TARGHETTA ML330 DESTRA ROSSA	1			x	
23	S02301277	SCOCCA ML 330 SX NERA	1			x	
24	T00200170	TARGHETTA MV925 SX ROSSA RAL3020	1			x	
25	0116730010	VITE AUTOF. 4 X 19 UNI 9707	5			x	
26	110008	NIPLES 3/8Gmx3/8Gm OT.	1				

Kit 1 - KIT RICAMBI ML 330 GUARNIZIONI - Cod. 4019900070
 Kit 2 - KIT RICAMBI ML 330 LEVA SIC ROSSA - Cod. 4019900072
 Kit 3 - KIT RICAMBI ML 330 SCOCHE VITI - Cod. 4019900073
 Kit 4 - KIT RIC. SW STD MV920-MV925-ML330 - Cod. 4019900020

DESCRIZIONE - TITLE		CODICE CLIENTE - CUSTOMER NUMBER	
ML 330 SW G 3/8 M - G 1/4 F			
<small> VERBALE APPROVAZIONE LO SMALTIAMO IN ECCELLO ANFINTE. E PER GARANTIRE L'USO CORRETTO DELLA MANIPOLAZIONE SCORRETELLA TEGOCOME S.p.A. IT IS CONSIDERED TO PARTIALLY OR TOTALLY COPY, USE, OR DISCLOSE THIS MATERIAL WITHOUT WRITTEN CONSENT FROM TEGOCOME S.p.A. </small>			
		CODICE - PART NO.	REV.
<small>ATA 102201001</small>		4013302017	0